

Super Balloon Centre

Upon opening the top of the Balloon Center box, you will find a plastic bag containing the header and set up instructions.

- 1) With the box lying flat on its side fully remove the Balloon Center. Be sure to locate the parts bag. The Balloon Center is shipped with center post as an integral unit.
- 2) Please remove packing material from the Balloon Center but **do not** discard the materials as they may be required at a later date.
- 3) Please refer to Fig. #2 on this sheet. Insert the retaining pin into the hole in the post making sure the washers and bearings are on the spinner side of the post.

4) Once the pin is in place, upright the Balloon Center on a level floor and test for a smooth spin. The Balloon Center should not rock or sway!

5) Next place the header on the Balloon Center following Fig. #1.

6) Locate the dimple the the top of the Balloon Center. This is a center point.

7) Fasten the header base using the two sided tape provided.

8) Proceed to install the header.

* For cleaning use only water with a mild soap if required.

** Do not place in direct sun light.

Fig. 1

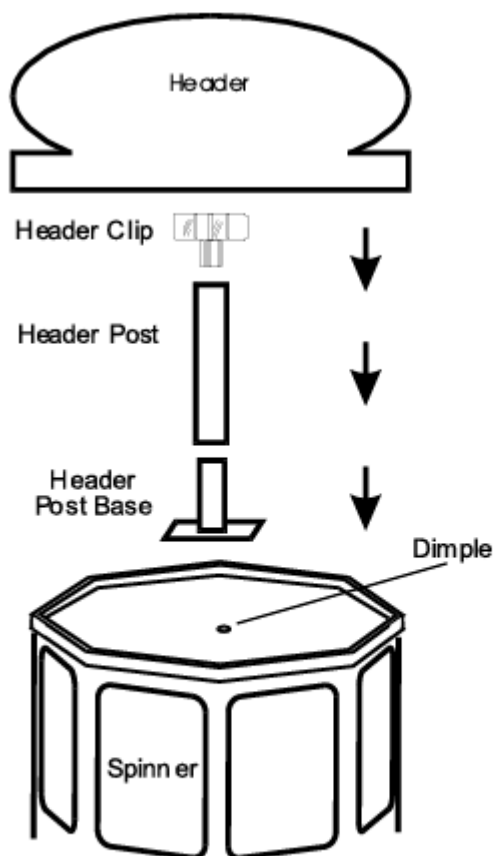


Fig. 2

